

1. The Lark in the Morning

Musical score for 'The Lark in the Morning' in G major, 6/8 time. It consists of four staves of music. The first staff begins with a repeat sign. The melody is characterized by eighth-note patterns and includes trills in the final measures of the second and third staves.

2. Donnybrook Fair The Joy of My Life

Musical score for 'Donnybrook Fair' in G major, 6/8 time. It consists of three staves of music. The melody features a mix of eighth and sixteenth notes, with trills in the final measures of the second and third staves.

3. The Cliffs of Moher

Musical score for 'The Cliffs of Moher' in G major, 6/8 time. It consists of three staves of music. The first staff includes two measures with a '4' below them, indicating a four-measure rest. The melody is primarily composed of eighth notes and includes trills in the final measures of the second and third staves.

4. The Blarney Pilgrim

Musical score for 'The Blarney Pilgrim' in 6/8 time, key of D major. The score consists of three staves. The first staff is the melody, featuring a mix of eighth and quarter notes with some grace notes. The second and third staves provide accompaniment with eighth-note patterns. The piece concludes with a repeat sign and a fermata.

5. Scatter the Mud

The Maid of Tramore

Musical score for 'Scatter the Mud' in 6/8 time, key of D major. The score consists of two staves. The first staff is the melody, characterized by a steady eighth-note accompaniment. The second staff provides a harmonic accompaniment with eighth-note patterns. The piece ends with a repeat sign and a fermata.

6. Tripping Up the Stairs

Musical score for 'Tripping Up the Stairs' in 6/8 time, key of D major. The score consists of two staves. The first staff is the melody, featuring a mix of eighth and quarter notes. The second staff provides accompaniment with eighth-note patterns. The piece concludes with a repeat sign and a fermata.

7. The Kesh Jig

Kerrigan's Jig

Musical score for 'The Kesh Jig' in 6/8 time, key of D major. The score consists of two staves. The first staff is the melody, featuring a mix of eighth and quarter notes with grace notes. The second staff provides accompaniment with eighth-note patterns. The piece concludes with a repeat sign and a fermata.

8. Saddle the Pony
The Priests Leap

Musical notation for 'Saddle the Pony' in G major, 6/8 time. The piece consists of two staves. The first staff contains the melody, and the second staff contains the accompaniment. The melody features a mix of eighth and sixteenth notes, with a final double bar line and repeat sign.

9. Whelan's Fancy

Musical notation for 'Whelan's Fancy' in G major, 6/8 time. The piece consists of two staves. The first staff contains the melody, which includes several notes with accents. The second staff contains the accompaniment. The melody concludes with a double bar line and repeat sign.

10. Morrison's

Musical notation for 'Morrison's' in G major, 6/8 time. The piece consists of three staves. The first staff contains the melody with accents on several notes. The second and third staves contain the accompaniment. The melody ends with a double bar line and repeat sign.

11. The Connaughtman's Rambles

Musical notation for 'The Connaughtman's Rambles' in G major, 6/8 time. The piece consists of two staves. The first staff contains the melody, and the second staff contains the accompaniment. The melody concludes with a double bar line and repeat sign.

12. The Clare Jig
The Mug of Brown Ale

Musical notation for 'The Clare Jig' in G major, 6/8 time. The piece consists of three staves of music. The first staff begins with a treble clef, a key signature of one sharp (F#), and a 6/8 time signature. The melody is written in a single line. The second and third staves continue the melody, with some notes marked with a tilde (~) indicating a grace note or a specific articulation. The piece concludes with a double bar line and repeat dots.

13. Garrett Barry's

Musical notation for 'Garrett Barry's' in G major, 6/8 time. The piece consists of two staves of music. The first staff begins with a treble clef, a key signature of one sharp (F#), and a 6/8 time signature. The melody is written in a single line. The second staff continues the melody, with some notes marked with a tilde (~) indicating a grace note or a specific articulation. The piece concludes with a double bar line and repeat dots.

14. The Gold Ring

Musical score for "The Gold Ring" in G major, 6/8 time. The score consists of seven staves of music. The first staff begins with a treble clef, a key signature of one sharp (F#), and a 6/8 time signature. The melody is characterized by eighth and sixteenth notes, often with accents. The second staff continues the melody with similar rhythmic patterns. The third staff features a more complex rhythmic pattern with eighth and sixteenth notes, including a four-measure rest marked with a '4'. The fourth staff continues the melody with accents. The fifth staff features a more complex rhythmic pattern with eighth and sixteenth notes, including a four-measure rest marked with a '4'. The sixth staff continues the melody with accents. The seventh staff features a more complex rhythmic pattern with eighth and sixteenth notes, including a four-measure rest marked with a '4'. The score concludes with a double bar line and repeat dots.

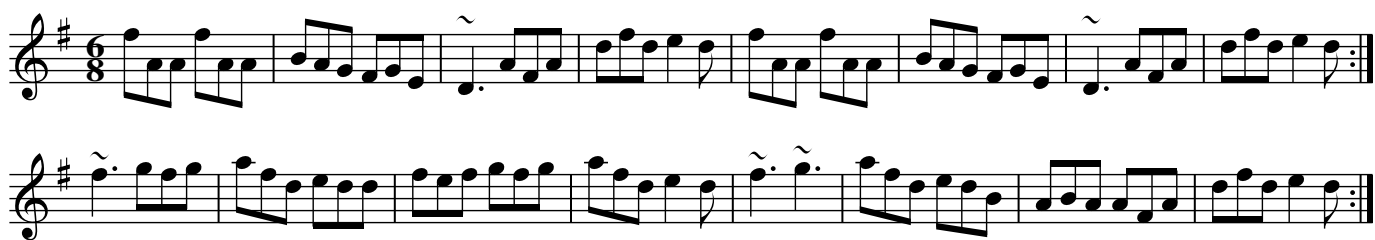
15. Fainne Oir Ort
The Gold Ring

Musical score for "Fainne Oir Ort" in G major, 6/8 time. The score consists of four staves of music. The first staff begins with a treble clef, a key signature of one sharp (F#), and a 6/8 time signature. The melody is characterized by eighth and sixteenth notes, often with accents. The second staff continues the melody with similar rhythmic patterns. The third staff continues the melody with accents. The fourth staff continues the melody with accents. The score concludes with a double bar line and repeat dots.

16. The Top of the Cork Road
Father O'Flynn



17. Sixpenny Money



18. The Old Hag in the Kiln
Dinny Delaney's



19. The Dingle Regatta

Musical score for 'The Dingle Regatta' in G major, 12/8 time. The score consists of three staves. The first staff contains the main melody with a key signature of one sharp (F#) and a 12/8 time signature. The second and third staves provide accompaniment. The piece concludes with a double bar line and repeat dots.

20. Kathleen Hehir's Slide

Musical score for 'Kathleen Hehir's Slide' in G major, 12/8 time. The score consists of four staves. The first staff contains the main melody with a key signature of one sharp (F#) and a 12/8 time signature. The second, third, and fourth staves provide accompaniment. The piece concludes with a double bar line and repeat dots.

21. Denis Murphy's Slide

Musical score for 'Denis Murphy's Slide' in G major, 12/8 time. The score consists of three staves. The first staff contains the main melody with a key signature of one sharp (F#) and a 12/8 time signature. The second and third staves provide accompaniment. The piece concludes with a double bar line and repeat dots.

22. Merrily Kiss the Quaker's Wife
Merrily Dance the Quaker

Musical score for 'Merrily Kiss the Quaker's Wife' in G major, 2/4 time. The score consists of three staves. The first staff contains the melody with a fermata over the eighth measure. The second staff is a harmonic accompaniment. The third staff is a more rhythmic accompaniment with slurs and accents.

23. The Foxhunter's Jig

Musical score for 'The Foxhunter's Jig' in G major, 3/8 time. The score consists of four staves. The first staff is the melody. The second staff is a harmonic accompaniment. The third and fourth staves are rhythmic accompaniments with slurs and accents.

24. The Butterfly

John Potts

Musical score for 'The Butterfly' in G major, 3/8 time. The score consists of three staves. The first staff is the melody. The second and third staves are harmonic and rhythmic accompaniments with slurs and accents.

25. The Kid on the Mountain

Musical score for "The Kid on the Mountain". The score consists of five staves of music in G major and 3/8 time. The first staff begins with a treble clef, a key signature of one sharp (F#), and a 3/8 time signature. The melody starts with a dotted quarter note on G4, followed by eighth notes. The second staff continues the melody with eighth notes and a quarter note. The third and fourth staves feature a more active melody with eighth and sixteenth notes, including a trill on G5 in the fourth staff. The fifth staff concludes the piece with a final cadence.

26. The Maid Behind the Bar
The Green Mountain

Musical score for "The Maid Behind the Bar". The score consists of four staves of music in G major and 2/4 time. The first staff begins with a treble clef, a key signature of one sharp (F#), and a 2/4 time signature. The melody starts with a quarter note on G4, followed by eighth notes. The second staff continues the melody with eighth notes and a quarter note. The third and fourth staves feature a more active melody with eighth and sixteenth notes, including a trill on G5 in the fourth staff. The fourth staff concludes the piece with a final cadence.

27. Miss McLeod's
Mrs. MacLeod of Raasay

Musical score for 'Miss McLeod's' in G major, 2/4 time. The score consists of four staves. The first staff begins with a repeat sign. The melody is simple and folk-like, featuring eighth and quarter notes. The accompaniment consists of a steady eighth-note pattern. The piece concludes with a double bar line and repeat dots.

28. The Merry Blacksmith

Musical score for 'The Merry Blacksmith' in G major, 2/4 time. The score consists of four staves. The melody is more rhythmic and lively than the previous piece, featuring eighth and quarter notes. The accompaniment is a steady eighth-note pattern. The piece concludes with a double bar line and repeat dots.

29. The Star of Munster

Musical score for "The Star of Munster" in G major (one sharp) and 2/4 time. The score consists of four staves of music. The first staff begins with a treble clef and a key signature of one sharp. The melody is written in a simple, folk-like style. The second staff continues the melody with a repeat sign at the end. The third staff features a repeat sign at the beginning and a fermata over a note. The fourth staff contains a triplet of eighth notes, indicated by a '3' below the first note, followed by a fermata over a note. The piece concludes with a double bar line.

30. Drowsy Maggie

Musical score for "Drowsy Maggie" in G major (one sharp) and 2/4 time. The score consists of four staves of music. The first staff begins with a treble clef and a key signature of one sharp. The melody is written in a simple, folk-like style. The second staff continues the melody with a repeat sign at the end. The third staff features a repeat sign at the beginning and a fermata over a note. The fourth staff contains a triplet of eighth notes, indicated by a '3' below the first note, followed by a fermata over a note. The piece concludes with a double bar line.

31. Saint Anne's Reel



Musical score for Saint Anne's Reel, consisting of four staves of music in treble clef, 2/4 time, and D major. The first staff begins with a treble clef, a key signature of one sharp (F#), and a common time signature (C). The melody is written in a single line. The second staff continues the melody. The third and fourth staves provide a harmonic accompaniment, with the fourth staff ending in a double bar line with repeat dots.

32. The Silver Spear



Musical score for The Silver Spear, consisting of three staves of music in treble clef, 2/4 time, and D major. The first staff features a melody with several accents (tilde marks) over the notes. The second and third staves provide a harmonic accompaniment, with the third staff ending in a double bar line with repeat dots.

33. Cooley's



Musical score for Cooley's, consisting of four staves of music in treble clef, 2/4 time, and D major. The first staff begins with a treble clef, a key signature of one sharp (F#), and a common time signature (C). The melody is written in a single line. The second staff continues the melody, featuring a triplet of eighth notes. The third and fourth staves provide a harmonic accompaniment, with the fourth staff ending in a double bar line with repeat dots.

34. The Pigeon on the Gate

Musical score for 'The Pigeon on the Gate' in G major, 2/4 time. The score consists of four staves. The first staff contains the melody with accents and a triplet. The second staff continues the melody with accents. The third and fourth staves provide a harmonic accompaniment with triplets.

35. Swinging on the Gate

Musical score for 'Swinging on the Gate' in G major, 2/4 time. The score consists of four staves. The first staff contains the melody. The second and fourth staves feature triplets in the accompaniment. The third staff continues the melody with accents.

36. The Galway Rambler

Walsh's Favorite

Wellington's

Musical score for "The Galway Rambler" in G major and 6/8 time. The score consists of five staves. The first staff begins with a treble clef, a key signature of one sharp (F#), and a common time signature (C). The melody is written in a single line. The second staff continues the melody. The third staff features a rhythmic accompaniment of eighth notes. The fourth staff continues the accompaniment. The fifth staff concludes the piece with a double bar line and repeat dots. A triplet of eighth notes is marked with a '3' in the fifth staff.

37. The Sally Gardens

Musical score for "The Sally Gardens" in G major and 6/8 time. The score consists of four staves. The first staff begins with a treble clef, a key signature of one sharp (F#), and a common time signature (C). The melody is written in a single line. The second staff continues the melody. The third staff features a rhythmic accompaniment of eighth notes. The fourth staff concludes the piece with a double bar line and repeat dots. A triplet of eighth notes is marked with a '3' in the fourth staff. Accents are placed over several notes in the first, second, and fourth staves.

38. Ships Are Sailing

Musical score for 'Ships Are Sailing' in G major, 2/4 time. The score consists of four staves. The first staff contains the melody with two triplet markings (3) and a fermata. The second staff contains a rhythmic accompaniment with triplet markings (3) and a fermata. The third and fourth staves contain further accompaniment parts.

39. Sheehan's Wellington's

Musical score for 'Sheehan's Wellington's' in G major, 2/4 time. The score consists of four staves. The first staff contains the melody with two fermatas. The second staff contains a rhythmic accompaniment. The third and fourth staves contain further accompaniment parts, including a triplet marking (3) in the final measure of the fourth staff.

40. The Shaskeen

Musical score for "The Shaskeen" in G major, 6/8 time. The score consists of five staves of music. The first staff contains the main melody with several grace notes. The second and third staves provide a steady accompaniment. The fourth and fifth staves continue the accompaniment and include a final measure with a fermata and a repeat sign.

41. The Wise Maid

Doherty's

Johnny Doherty

Musical score for "The Wise Maid Doherty's" in G major, 6/8 time. The score consists of four staves of music. The first staff begins with a grace note and includes a triplet of eighth notes. The second and third staves provide accompaniment, with the second staff also featuring a triplet. The fourth staff continues the accompaniment and ends with a fermata and a repeat sign.

42. The Bank of Ireland

Musical score for 'The Bank of Ireland' in G major, 2/4 time. The score consists of four staves. The first staff contains the main melody. The second staff features a rhythmic accompaniment with eighth-note patterns. The third and fourth staves provide further melodic and harmonic support, including a triplet of eighth notes in the fourth staff. The piece concludes with a double bar line and a key signature change to G major.

43. The Sligo Maid

Musical score for 'The Sligo Maid' in G major, 2/4 time. The score consists of four staves. The first staff contains the main melody with a triplet of eighth notes. The second staff features a rhythmic accompaniment with eighth-note patterns. The third and fourth staves provide further melodic and harmonic support, including a triplet of eighth notes in the second staff. The piece concludes with a double bar line and a key signature change to G major.

44. Christmas Eve
Tommy Coen's

Tommy Coen

Musical score for "Christmas Eve" by Tommy Coen's. The score is written in treble clef with a key signature of one sharp (F#) and a common time signature (C). It consists of six staves of music. The first two staves contain the main melody, with various note values and rests. The third and fourth staves feature a triplet of eighth notes, indicated by a '3' below the notes. The fifth and sixth staves continue the melody with various note values and rests, including some notes with accents.

45. The Temperance Reel
The Teetotaller's Reel

Musical score for "The Temperance Reel" by The Teetotaller's Reel. The score is written in treble clef with a key signature of one sharp (F#) and a common time signature (C). It consists of four staves of music. The first two staves contain the main melody, with various note values and rests. The third and fourth staves continue the melody with various note values and rests, including some notes with accents.

46. Junior Crehan's Favorite
The Knotted Cord

Musical score for 'The Knotted Cord' in G major, 2/4 time. The score consists of four staves. The first two staves contain the main melody with trills and triplets. The last two staves provide a harmonic accompaniment with a steady eighth-note pattern. The piece concludes with a double bar line.

47. The Earl's Chair

Musical score for 'The Earl's Chair' in G major, 2/4 time. The score consists of four staves. The first two staves contain the main melody with trills and eighth-note patterns. The last two staves provide a harmonic accompaniment with a steady eighth-note pattern. The piece concludes with a double bar line.

48. The Fermoy Lasses

Musical score for "The Fermoy Lasses" in G major and 6/8 time. The score consists of four staves. The first staff begins with a repeat sign. The second staff ends with a repeat sign. The third and fourth staves contain triplets and other melodic lines. The key signature is one sharp (F#).

49. The Rights of Man

Musical score for "The Rights of Man" in G major and 4/4 time. The score consists of four staves. The first staff begins with a 4/4 time signature. The second and fourth staves contain triplets. The key signature is one sharp (F#).

50. The Boys of Bluehill

Musical score for 'The Boys of Bluehill' in G major (one sharp) and 4/4 time. The score consists of four staves. The first staff begins with a treble clef, a key signature of one sharp (F#), and a 4/4 time signature. The melody is written in a single line. The second staff continues the melody and includes a triplet of eighth notes. The third staff continues the melody. The fourth staff concludes the piece with a double bar line and repeat dots. The number '3' is written below the triplet in the second and fourth staves.

51. Harvest Home

Musical score for 'Harvest Home' in G major (one sharp) and 4/4 time. The score consists of four staves. The first staff begins with a treble clef, a key signature of one sharp (F#), and a 4/4 time signature. The melody is written in a single line. The second staff includes two triplet markings over eighth notes. The third staff includes two accent markings (~) over eighth notes. The fourth staff concludes the piece with a double bar line and repeat dots. The number '3' is written below the triplet markings in the second and fourth staves.

52. Off to California

Musical score for "Off to California" in G major, 4/4 time. The score consists of four staves of music. The first staff begins with a treble clef, a key signature of one sharp (F#), and a 4/4 time signature. The melody starts with a triplet of eighth notes (G4, A4, B4) followed by a series of eighth and quarter notes. The second staff continues the melody with more triplet markings. The third staff features a series of eighth notes. The fourth staff concludes the piece with a final triplet and a double bar line.

53. Kitty's Wedding

Musical score for "Kitty's Wedding" in G major, 4/4 time. The score consists of four staves of music. The first staff begins with a treble clef, a key signature of one sharp (F#), and a 4/4 time signature. The melody starts with a quarter note (G4) followed by eighth and quarter notes. The second staff continues the melody with eighth and quarter notes. The third staff features a series of eighth notes. The fourth staff concludes the piece with a final eighth note and a double bar line.

54. The Home Ruler

Musical score for "The Home Ruler" in 4/4 time, featuring four staves of music. The key signature is one sharp (F#). The piece includes various rhythmic patterns and triplet markings.

55. The Plains of Boyle

Musical score for "The Plains of Boyle" in 4/4 time, featuring four staves of music. The key signature is one sharp (F#). The piece is characterized by frequent triplet markings.

56. The Ballydesmond Polka #1

Musical score for 'The Ballydesmond Polka #1' in G major (one sharp) and 2/4 time. The score consists of four staves of music. The first staff begins with a treble clef, a key signature of one sharp (F#), and a 2/4 time signature. The melody is characterized by eighth and sixteenth notes, with some triplet patterns. The second staff continues the melody with similar rhythmic patterns. The third and fourth staves provide accompaniment, featuring a steady eighth-note bass line and occasional sixteenth-note figures.

57. The Ballydesmond Polka #2
Maurice Manley's

Musical score for 'The Ballydesmond Polka #2' in G major (one sharp) and 2/4 time. The score consists of two staves of music. The first staff begins with a treble clef, a key signature of one sharp (F#), and a 2/4 time signature. The melody is characterized by eighth and sixteenth notes, with some triplet patterns. The second staff provides accompaniment, featuring a steady eighth-note bass line and occasional sixteenth-note figures.

58. The Ballydesmond Polka #3
Tom Billy's

Musical score for 'The Ballydesmond Polka #3' in G major (one sharp) and 2/4 time. The score consists of two staves of music. The first staff begins with a treble clef, a key signature of one sharp (F#), and a 2/4 time signature. The melody is characterized by eighth and sixteenth notes, with some triplet patterns. The second staff provides accompaniment, featuring a steady eighth-note bass line and occasional sixteenth-note figures.

59. Spanish Lady

Musical notation for 'Spanish Lady' in G major, 2/4 time. The piece consists of two staves. The first staff contains the melody, starting with a repeat sign and a first ending. The second staff contains the accompaniment, featuring a rhythmic pattern of eighth and sixteenth notes.

60. Charlie Harris' Polka

Musical notation for 'Charlie Harris' Polka' in G major, 2/4 time. The piece consists of two staves. The first staff contains the melody. The second staff contains the accompaniment, which includes two first endings labeled '1' and '2'.

61. Maggie in the Woods

Musical notation for 'Maggie in the Woods' in G major, 2/4 time. The piece consists of two staves. The first staff contains the melody. The second staff contains the accompaniment, featuring a rhythmic pattern of eighth and sixteenth notes.

62. Denis Murphy's Polka

Musical notation for 'Denis Murphy's Polka' in G major, 2/4 time. The piece consists of two staves. The first staff contains the melody. The second staff contains the accompaniment, featuring a rhythmic pattern of eighth and sixteenth notes.

Index

The Ballydesmond Polka #1	24
The Ballydesmond Polka #2	24
The Ballydesmond Polka #3	24
The Bank of Ireland	17
The Blarney Pilgrim	2
The Boys of Bluehill	21
The Butterfly	8
Charlie Harris' Polka	25
Christmas Eve	18
The Clare Jig	4
The Cliffs of Moher	1
The Connaughtman's Rambles	3
Cooley's	12
Denis Murphy's Polka	25
Denis Murphy's Slide	7
The Dingle Regatta	7
Dinny Delaney's	6
Doherty's	16
Donnybrook Fair	1
Drowsy Maggie	11
The Earl's Chair	19
Fainne Oir Ort	5
Father O'Flynn	6
The Fermoy Lasses	20
The Foxhunter's Jig	8
The Galway Rambler	14
Garrett Barry's	4
The Gold Ring	5
The Gold Ring	5
The Green Mountain	9
Harvest Home	21
The Home Ruler	23
The Joy of My Life	1
Junior Crehan's Favorite	19
Kathleen Hehir's Slide	7
Kerrigan's Jig	2
The Kesh Jig	2
The Kid on the Mountain	9
Kitty's Wedding	22
The Knotted Cord	19

The Lark in the Morning	1
Maggie in the Woods	25
The Maid Behind the Bar	9
The Maid of Tramore	2
Maurice Manley's	24
Merrily Dance the Quaker	8
Merrily Kiss the Quaker's Wife	8
The Merry Blacksmith	10
Miss McLeod's	10
Morrison's	3
Mrs. MacLeod of Raasay	10
The Mug of Brown Ale	4
Off to California	22
The Old Hag in the Kiln	6
The Pigeon on the Gate	13
The Plains of Boyle	23
The Priests Leap	3
The Rights of Man	20
Saddle the Pony	3
Saint Anne's Reel	12
The Sally Gardens	14
Scatter the Mud	2
The Shaskeen	16
Sheehan's	15
Ships Are Sailing	15
The Silver Spear	12
Sixpenny Money	6
The Sligo Maid	17
Spanish Lady	25
The Star of Munster	11
Swinging on the Gate	13
The Teetotaller's Reel	18
The Temperance Reel	18
Tom Billy's	24
Tommy Coen's	18
The Top of the Cork Road	6
Tripping Up the Stairs	2
Walsh's Favorite	14
Wellington's	14
Wellington's	15
Whelan's Fancy	3
The Wise Maid	16